

## A RESEARCH-BASED DESIGN FOR TEACHING MATTER AND HEAT TO VISUALLY IMPAIRED STUDENTS

Mustafa SOZBILIR, Email: sozbilir@atauni.edu.tr  
Aydin KIZILASLAN & S. Levent ZORLUOGLU

This study is part of a project financially supported by TUBITAK with contract number 114K725

### IMPAIRMENTS & DISABILITY

- o **Impairments** are problems in body function or alterations in body structures such as blindness (WHO, 2011)
- o **Disability** is defined as the loss or limitation of opportunities to take part in society on an equal level with others due to social and environmental barriers (Northern Officer Group Report, 2002)
- o WHO states that **disability is not an attribute of the person, but inaccessible environments create disability** by creating barriers to participation and inclusion.

### VISUAL IMPAIRMENT (VI)

- o **Visual impairment (VI)**, also known as **vision impairment** or **vision loss**, is a decreased ability to see to a degree that causes problems not fixable by usual means, such as glasses (WHO, 2011).

### CAUSES OF VI

```

graph TD
    VI[VI] --> Congenital[Congenital]
    VI --> Adventitious[Adventitious]
    Congenital --- C["Impairment occurs before or at birth  
visual memory not developed"]
    Adventitious --- A["Impairment acquired after birth  
Visual memory may not developed"]
    
```

### TERMS USED IN VI

- o **Blind** refers to individuals with **no vision** or **only light perception**.

The word 'blind' is only a physical description of a person's vision and should not be used for the person's abilities, intelligence, personalities, or interest

### TERMS USED IN VI (CONT.)

- o **Legal blindness** is defined as
  - central visual acuity of 20/200 feet (or 6/60 in metric system) or less in better eye with best correction **OR**
  - a central visual acuity of more than 20/200 if there is a visual field defect in which the widest diameter of visual field subtends an angular distance of no greater than 20 degrees.
- o Inability to read the top letter from 20 feet is considered **legally blind**.

SS.7  
1000

|                 |    |        |
|-----------------|----|--------|
| E               | 1  | 20/200 |
| F P             | 2  | 20/100 |
| T O Z           | 3  | 20/70  |
| L P E D         | 4  | 20/50  |
| P E C F D       | 5  | 20/40  |
| E D F C Z F     | 6  | 20/30  |
| F E L O P E D   | 7  | 20/25  |
| S E P P O P E C | 8  | 20/20  |
| L E P O P E C   | 9  |        |
| F P P A L T O Z | 10 |        |
| .....           | 11 |        |

[https://en.wikipedia.org/wiki/Snellen\\_chart](https://en.wikipedia.org/wiki/Snellen_chart)

## TERMS USED IN VI (CONT.)

- o **Low vision** is generally defined as
  - a central visual acuity of 20/70 to 20/200 in the better eye with correction **or**
  - a visual field of 20 to 40 degrees or less in better eye with correction.

24th ICCE August 15-20, 2016 Kuching Malaysia

## TERMS USED IN VI (CONT.)

Definitions changes place to place due to the state benefits that provided to the visually impaired people.

Since the term **blind** has a negative connotation to some people, some prefer to use **visually impaired**.

24th ICCE August 15-20, 2016 Kuching Malaysia

## VI vs SIGHTED STUDENTS

- o Students with VI are required to complete the same curriculum and examinations as sighted students.
- o However, resources and instructional methods are based on the vision is partly or not accessible at all by visually impaired students.

24th ICCE August 15-20, 2016 Kuching Malaysia

## CHALLENGES OF VISUAL IMPAIRMENT IN THE CLASSROOM

- o Fewer opportunities to acquire information visually (i.e. maps, art)
- o Learning Difficulties
  - may read very slowly –fall behind
  - difficult to meet the demands of general education classroom (note taking, etc)
- o Social difficulties
  - can't catch non-verbal cues from others
  - inability to judge distance ( i.e. stand too close when socializing)

24th ICCE August 15-20, 2016 Kuching Malaysia

## TEACHING SCIENCE TO VISUALLY IMPAIRED STUDENTS

- o The students who are blind or visually impaired will typically need variety of assistance to explore and examine real materials or models together with some adaptations in the environment in order to let students having safe and full access to science.
- o They must be exposed to a variety of experiences in science that can reasonably be explored.
- o Science materials may include talking devices, tactile charts, reading materials, and equipment. But traditionally science teaching mostly depends on visual instruction.

24th ICCE August 15-20, 2016 Kuching Malaysia

## PURPOSE OF THE RESEARCH

- o Identify VI students' needs in learning science
- o Development accessible instructional materials and activities for students with VI
- o Develop design principles for instructional materials for VI students in science

24th ICCE August 15-20, 2016 Kuching Malaysia

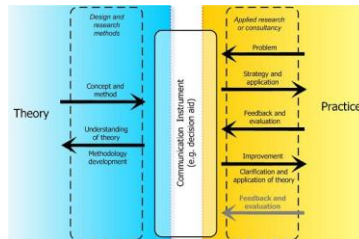
### RESEARCH QUESTIONS

1. What are the students' needs for the learning the concepts of 'Matter and the Heat' unit?
2. How to develop instructional materials and activities that accessible by VI students?
3. What are the design principles for developing instructional materials for VI students in science with particular emphasis on 'Matter and heat' unit?
4. What are the factors affecting the usefulness of the developed instructional design model?

Zahri ICCE August 15-20, 2016 Kuching Malaysia

### RESEARCH METHOD DESIGN BASED RESEARCH

In this design based research (DBR) study, we developed an instructional design to narrow the gap between theory and practices. DBR focuses on developing theory and a methodology of designing, and DBR uses design research at a higher abstraction level



Zahri ICCE August 15-20, 2016 Kuching Malaysia

### RESEARCH METHOD: DESIGN BASED RESEARCH

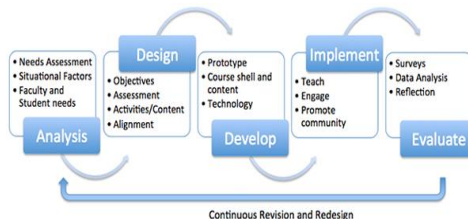
The steps of the design-based research



Zahri ICCE August 15-20, 2016 Kuching Malaysia

### ADDIE INSTRUCTIONAL DESIGN MODEL

The ADDIE Model is an approach used by instructional designers and content developers to create instructional course materials. The model has been adopted as the standard method by many instructional designers because of its flexibility



Zahri ICCE August 15-20, 2016 Kuching Malaysia

### THE STUDY GROUPS

|  | Students no | Gender | Visual acuity         |
|--|-------------|--------|-----------------------|
| Needs Analysis Sample Group (DBR-15)       | NA1         | Male   | Low vision            |
|  | NA2         | Male   | Low vision            |
|  | NA3         | Female | Low vision (advanced) |
|  | NA4         | Female | Low vision            |
|  | NA5         | Male   | Low vision            |
|  | NA6         | Female | Low vision            |
| Implementation Phase Sample Group (DBR-15) | O1          | Female | Blind                 |
|  | O2          | Female | Low vision (advanced) |
|  | O3          | Female | Low vision            |
|  | O4          | Male   | Low vision            |
|  | O5          | Male   | Low vision            |
|  | O6          | Male   | Low vision            |
|  | O7          | Male   | Low vision            |
|  | O8          | Male   | Low vision (advanced) |

Zahri ICCE August 15-20, 2016 Kuching Malaysia

### THE TEACHER

- o Worked with a teacher:
  - a male temporary replacement teacher, with no teaching experience, first time teaching.
  - Has no training for teaching VI students

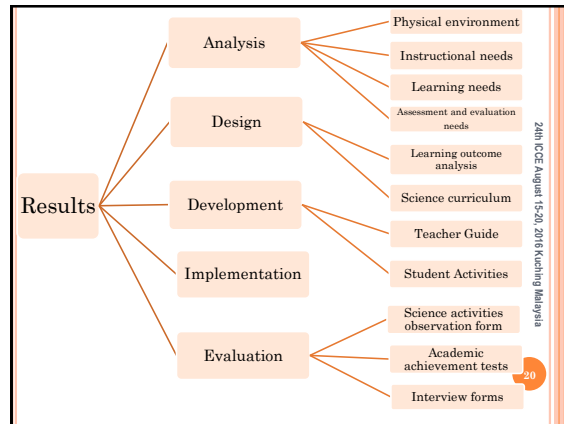
### DATA COLLECTION TOOLS

- o Interviews and observations constitute the main data collection tools in this study.

1. Science lesson observation form (Needs analysis)
2. Science activities observation form (Evaluation)
3. Semi-structured teacher and students interview form (Needs Analysis + Evaluation)
4. Academic achievement tests (Evaluation)

Zahri ICCE August 15-20, 2016 Kuching Malaysia

19



### ANALYSIS

|                                 |  |
|---------------------------------|--|
| Physical environment            | <ul style="list-style-type: none"> <li>• Classroom design and location of furnitures</li> <li>• Accessibility of materials in the classroom</li> <li>• Contrast at the colors of furniture, floors and walls for the students with low vision</li> </ul>   |
| Instructional needs             | <ul style="list-style-type: none"> <li>• Availability of enlarged texts according to the needs of student's impairment</li> <li>• Clear verbal communication during teaching process</li> <li>• The efficient use of time</li> <li>• The introduction of the materials</li> </ul>  |
| Learning needs                  | <ul style="list-style-type: none"> <li>• Students' difficulties in distinguishing between the concepts of heat and temperature</li> <li>• The difficulties are experienced in the heat conduction ways</li> <li>• Fuel types are not acquired</li> <li>• Activities for the whole concept should be developed</li> </ul> |
| Assessment and evaluation needs | <ul style="list-style-type: none"> <li>• Exam paper should be Century Gothic, double-spaced, at least 18 points for students with low vision</li> <li>• Multiple choice test questions should be read by an assistant for blind students or printed in braille</li> </ul>  |

Zahri ICCE August 15-20, 2016 Kuching Malaysia

21

### NEEDS

- o VI students have several conceptual misunderstandings/no understanding of basic concepts
- o VI students are tend to learn through memorisation
- o VI students need to develop practical skills, scientific process skills, critical thinking skills based on the practice, writing and reading skills are weak.
- o VI students have negative views on science and mathematics. Be aware of this!
- o Each VI student has different needs due to their visual aquity, personal needs, education background etc.
- o VI students are easily distracted, lost connection.
- o ....

Zahri ICCE August 15-20, 2016 Kuching Malaysia

22

### DESIGN

Learning outcomes of 'Matter and Heat' unit were classified according to the Revised Bloom's Taxonomy and designed activities are analyzed according to Science Curriculum to the learning areas

|   |  |
|---|--|
| Learning Outcome Analysis according to Revised Bloom's Taxonomy | Science Curriculum to the learning areas |
| The knowledge dimension   | Cognitive process dimension              |
| Skills Affective STSE   |  |

Zahri ICCE August 15-20, 2016 Kuching Malaysia

23

### DEVELOPMENT

In the light of data obtained from the analysis and design stages of ADDIE model guides were developed

- Teacher's Guide
- Student Guide

Zahri ICCE August 15-20, 2016 Kuching Malaysia

24

### IMPLEMENTATION

- o Design model was applied for four weeks (4 hours in each week) total of 16 hours.
- o All lessons were recorded by video camera.
- o Activity sheets were distributed to students before each lesson.
- o Each class included practical activities accessible by VI students.
- o Students were given extra time to investigate the materials at the beginning.
- o They were allowed to carry activities as small group (2-3 students) as well as individually.

Zahri ICCE August 15-20, 2016 Kuching Malaysia

25

### SAMPLE CLASS BEFORE & AFTER

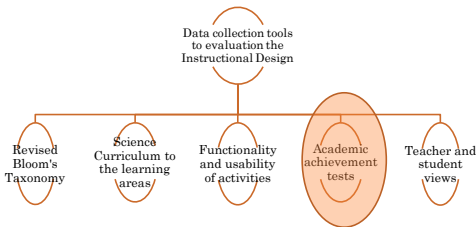
Topic: Heat conductor and heat insulator  
 Observation Date: 03.25.2015  
 Observation Before The Intervention

Zahri ICCE August 15-20, 2016 Kuching Malaysia

26

### EVALUATION

At this stage instructional design model was evaluated by the following data collection tools



Zahri ICCE August 15-20, 2016 Kuching Malaysia

27

### DATA OF EVALUATION STAGE OF ADDIE MODEL

- o All qualitative data is currently in the analysis phase. Only results of academic achievement tests are available.
- o Quantitative data is based on achievement scores on the test taken.
- o Gain score analysis was used to see the students gains. Because the gain score controls for individual differences in pretest scores by measuring the posttest score relative to the each person's pretest score.

Zahri ICCE August 15-20, 2016 Kuching Malaysia

28

### GAIN SCORE ANALYSIS OF ACADEMIC ACHIEVEMENT TESTS

Calculate using pre/post test scores:

$$g = (\% \text{posttest} - \% \text{pretest}) / (100 - \% \text{pretest})$$

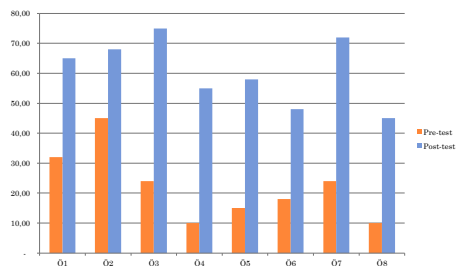
| Student # | PRE score (%) | POST score (%) | Gain        |
|-----------|---------------|----------------|-------------|
| O1        | 32            | 65             | 0.49        |
| O2        | 45            | 68             | 0.42        |
| O3        | 24            | 75             | 0.67        |
| O4        | 10            | 55             | 0.50        |
| O5        | 15            | 58             | 0.51        |
| O6        | 18            | 48             | 0.37        |
| O7        | 24            | 72             | 0.63        |
| O8        | 10            | 45             | 0.39        |
| <b>g:</b> |               |                | <b>0.49</b> |

"High-g" courses as those with > 0.7  
 "Medium-g" courses as those with 0.7 > ( ) > 0.3;  
 "Low-g" courses as those with < 0.3.

Zahri ICCE August 15-20, 2016 Kuching Malaysia

29

### COMPARISON OF PRE & POST-TEST



Zahri ICCE August 15-20, 2016 Kuching Malaysia

30

## DISCUSSION

- As a result, the design model has led to a change in the students' academic success rate of 49% (medium g).
- However, the observations showed evidence that VI students gained practical skills such as measuring, recording, reporting as well as analysis and critical thinking skills.
- VI students negative views on science started to become change. However, it seems they still see science as enjoyment or play rather than something part of their life!
- Each VI student has different needs. VI students needs should be identified individually.
- Close collaboration of working together students, teachers, parents and experts are required.
- As VI students are easily distracted by unnecessary details, materials has to be simple and focussed.
- As their reading and writing skills are so weak, it is better to give them handouts for the activities and materials.

Zahit ÖCE August 15-20, 2016 Kocaeli University

31

